

DOT PROJECT 320-0016

FACT SHEET



WINDSOR LOCKS

The Department is in the process of designing a new station on the Hartford Line in Windsor Locks, CT. This station will include a single high-level platform, a multi-use trail with connections to the Canal Trail via Bridge Street, parking, and other amenities similar to the newly constructed Hartford Line Stations.



STATION RENDERING

The 510 foot-long platform will be fully ADA compliant, with level-boarding from every train car. The station is to be relocated to downtown Windsor Locks. The project also includes reconstruction of Route 159, closing of Church Street at Route 159, and improvements to nearly 1.5 miles of mainline track. This project would also complement the town's new Transit Oriented Development Area (TOD) in downtown Windsor Locks and the development at Montgomery Mills.

SCHEDULE & COST

START CONSTRUCTION

Late 2020

ANTICIPATED COMPLETION

Late 2023

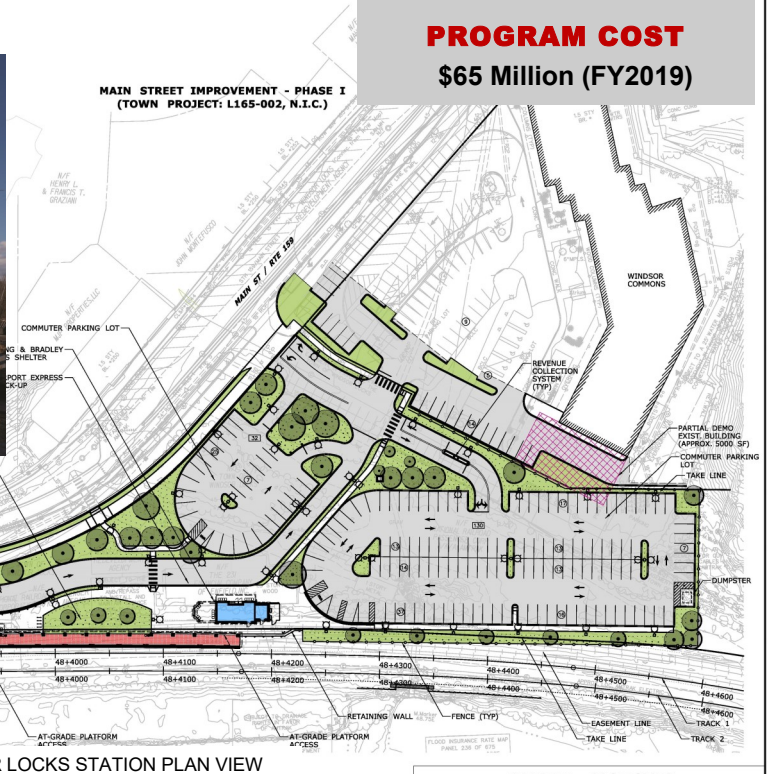
PROGRAM COST

\$65 Million (FY2019)



MONTGOMERY MILLS

IMPROVEMENT - PHASE II (PROJECT: 320-0016)



CONCEPT - 09/17/2019



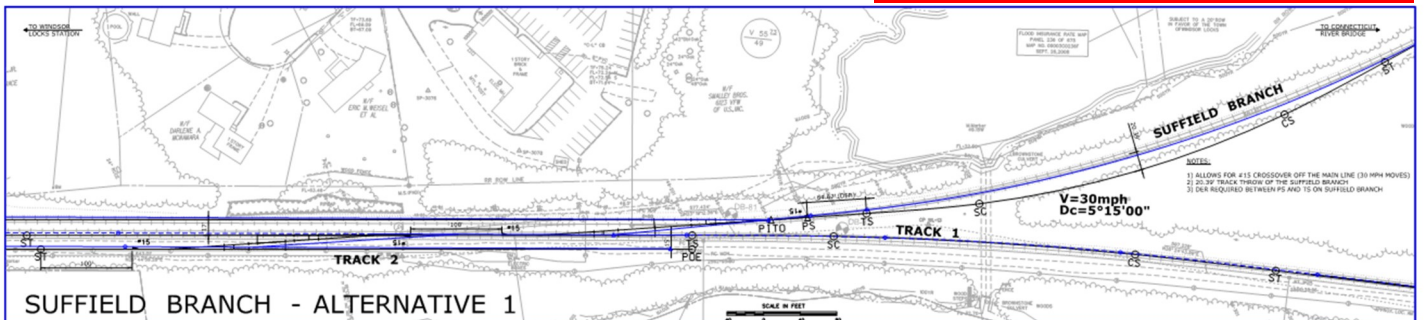
PROJECT ELEMENTS

- RECONSTRUCT ROUTE 159 FROM BRIDGE ST TO THE STATION
- 1.5 MILES RECONSTRUCTION OF AMTRAK MAIN LINE
- RECONSTRUCTION OF THE SUFFIELD WYE
- RELOCATE EXISTING STATION TO DOWNTOWN
- POTENTIAL BUS CONNECTION TO BRADLEY INT'L AIRPORT
- CONSTRUCT A NEW MOW YARD AT THE CURRENT STATION

Route 159 & Bridge Street



1.5 Miles of New Track & WYE



NEW MOW YARD



STATION

